



Wire Shelving

Wire Shelving

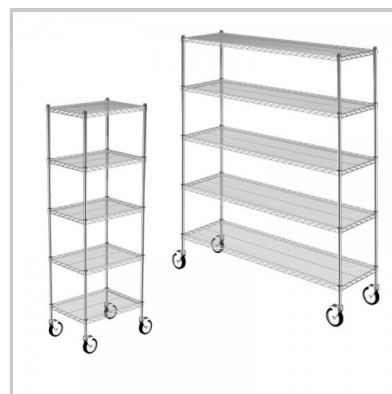
Fit more stock into tight spaces safely with our high-quality, easy to assemble Selcare wire shelving system. Standard kits make it simple for you to manage, transport and store your sterile stock.



Static Wire Shelf Units - 5 Shelves



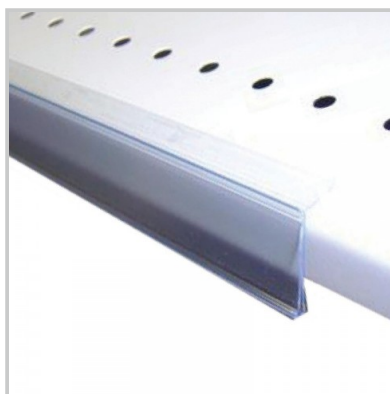
Static Wire Shelf Units - 4 Shelves



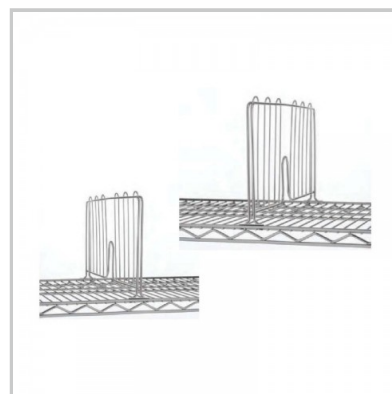
Mobile Wire Shelf Units - 5 Shelves



Mobile Wire Shelf Units - 4 Shelves



Label Strip



Wire Shelf Dividers



Wire Shelf Ledge



Dust Cover - Flap Back

Static Wire Shelf Units - 5 Shelves

Static five shelves chrome units, 1880mm high, two choices in depth and five choices of length.



Key Benefits

- | 1880mm high five (5) shelf chrome units
- | Shelf depths: 460mm or 610mm options
- | Shelf lengths: 610, 915, 1220, 1525 or 1830mm options
- | Sturdy and easy to assemble
- | Conform to Australian Standards
- | Ideal for infection / dust control
- | Large range of accessories available
- | Two (2) year corrosion warranty

Why Buy?

Our range of static 1880mm high 5 shelf units sizing options ensures complete flexibility. Our simplified and faster assembly system will help you. They have excellent chrome coatings and load capacity for your peace of mind. Each unit contains four (4) posts - 1880mm high, five (5) shelves and tube end fixings.

Fit more stock into tighter spaces safely with our high quality and easy to assemble Selcare wire system using numbered shelf positions. We have designed standard kits making it easier for you to manage, transport and store your sterile stock. There are many shelving size options available which provides you with the ability to effectively utilize any space.

Find the accessories to make sure your storage can be managed effectively and efficiently with these accessories: [shelf dividers](#), [shelf ledges](#) and [label holders](#). Try our proven system and build your way today!

Static Wire Shelf Units - 5 Shelves



460mm D x 610mm L x 1880mm H



460 or 610mm D x 915mm L x 1880mm H



460 or 610mm D x 1220mm L x 1880mm H



460 or 610mm D x 1525mm L x 1880mm H



460 or 610mm D x 1830mm L x 1880mm H

Product Codes (460mm D)

610mm Long - SCS-64518

915mm Long - SCS-94518

1220mm Long - SCS-124518

1525mm Long - SCS-154518

1830mm Long - SCS-184518

Product Codes (610mm D)

915mm Long - SCS-96518

1220mm Long - SCS-126518

1525mm Long - SCS-156518

1830mm Long - SCS-186518

Static Wire Shelf Units - 4 Shelves

Static four shelves chrome units, 1880mm high, two choices in depth and five choices of length.



Key Benefits

- | 1880mm high four (4) shelf chrome units
- | Shelf depths: 460mm or 610mm options
- | Shelf lengths: 610, 915, 1220, 1525 or 1830mm options
- | Sturdy and easy to assemble
- | Conform to Australian Standards
- | Ideal for infection / dust control
- | Large range of accessories available
- | Two (2) year corrosion warranty

Why Buy?

Our range of static 1880mm high 4 shelf units sizing options ensures complete flexibility. Our simplified and faster assembly system will help you. They have excellent chrome coatings and load capacity for your peace of mind. Each unit contains four (4) posts - 1880mm high, four (4) shelves and tube end fixings.

Fit more stock into tighter spaces safely with our high quality and easy to assemble Selcare wire system using numbered shelf positions. We have designed standard kits making it easier for you to manage, transport and store your sterile stock. There are many shelving size options available which provides you with the ability to effectively utilize any space.

Find the accessories to make sure your storage can be managed effectively and efficiently with these accessories: [shelf dividers](#), [shelf ledges](#) and [label holders](#). Try our proven system and build your way today!

Static Wire Shelf Units - 4 Shelves



460mm D x 610mm L x 1880mm H



460 or 610mm D x 915mm L x 1880mm H



460 or 610mm D x 1220mm L x 1880mm H



460 or 610mm D x 1525mm L x 1880mm H



460 or 610mm D x 1830mm L x 1880mm H

Product Codes (460mm D)

610mm Long - SCS-64418

915mm Long - SCS-94418

1220mm Long - SCS-124418

1525mm Long - SCS-154418

1830mm Long - SCS-184418

Product Codes (610mm D)

915mm Long - SCS-96418

1220mm Long - SCS-126418

1525mm Long - SCS-156418

1830mm Long - SCS-186418

Mobile Wire Shelf Units - 5 Shelves

Mobile five shelves chrome units, 1900mm high, two choices in depth and five choices of length.



Key Benefits

- | 1900mm high five (5) shelf chrome units
- | Shelf depths: 460mm or 610mm options
- | Shelf lengths: 610, 915, 1220, 1525 or 1830mm options
- | Sturdy and easy to assemble
- | Conform to Australian Standards
- | Ideal for infection / dust control
- | Large range of accessories available
- | Two (2) year corrosion warranty

Why Buy?

Our range of static 1900mm high 5 shelf units sizing options ensures complete flexibility. Our simplified and faster assembly system will help you. They have excellent chrome coatings and load capacity for your peace of mind. Each unit contains four (4) posts - 1900mm high, five (5) shelves, castors and tube end fixings.

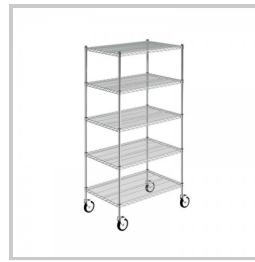
Fit more stock into tighter spaces safely with our high quality and easy to assemble Selcare wire system using numbered shelf positions. We have designed standard kits making it easier for you to manage, transport and store your sterile stock. There are many shelving size options available which provides you with the ability to effectively utilize any space.

Find the accessories to make sure your storage can be managed effectively and efficiently with these accessories: [shelf dividers](#), [shelf ledges](#) and [label holders](#). Try our proven system and build your way today!

Mobile Wire Shelf Units - 5 Shelves



460mm D x 610mm L x 1900mm H



460 or 610mm D x 915mm L x 1900mm H



460 or 610mm D x 1220mm L x 1900mm H



460 or 610mm D x 1525mm L x 1900mm H



460 or 610mm D x 1830mm L x 1900mm H

Product Codes (460mm D)

610mm Long - SCM-64418
915mm Long - SCM-94418
1220mm Long - SCM-124418
1525mm Long - SCM-154418
1830mm Long - SCM-184418

Product Codes (610mm D)

915mm Long - SCM-96418
1220mm Long - SCM-126418
1525mm Long - SCM-156418
1830mm Long - SCM-186418

Mobile Wire Shelf Units - 4 Shelves

Mobile four shelves chrome units, 1900mm high, two choices in depth and five choices of length.



Key Benefits

- | 1900mm high four (4) shelf chrome units
- | Shelf depths: 460mm or 610mm options
- | Shelf lengths: 610, 915, 1220, 1525 or 1830mm options
- | Sturdy and easy to assemble
- | Conform to Australian Standards
- | Ideal for infection / dust control
- | Large range of accessories available
- | Two (2) year corrosion warranty

Why Buy?

Our range of static 1900mm high 4 shelf units sizing options ensures complete flexibility. Our simplified and faster assembly system will help you. They have excellent chrome coatings and load capacity for your peace of mind. Each unit contains four (4) posts - 1900mm high, four (4) shelves, castors and tube end fixings.

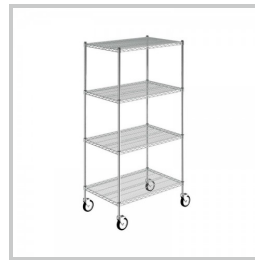
Fit more stock into tighter spaces safely with our high quality and easy to assemble Selcare wire system using numbered shelf positions. We have designed standard kits making it easier for you to manage, transport and store your sterile stock. There are many shelving size options available which provides you with the ability to effectively utilize any space.

Find the accessories to make sure your storage can be managed effectively and efficiently with these accessories: [shelf dividers](#), [shelf ledges](#) and [label holders](#). Try our proven system and build your way today!

Mobile Wire Shelf Units - 4 Shelves



460mm D x 610mm L x 1900mm H



460 or 610mm D x 915mm L x 1900mm H



460 or 610mm D x 1220mm L x 1900mm H



460 or 610mm D x 1525mm L x 1900mm H



460 or 610mm D x 1830mm L x 1900mm H

Product Codes (460mm D)

610mm Long - SCM-64418
915mm Long - SCM-94418
1220mm Long - SCM-124418
1525mm Long - SCM-154418
1830mm Long - SCM-184418

Product Codes (610mm D)

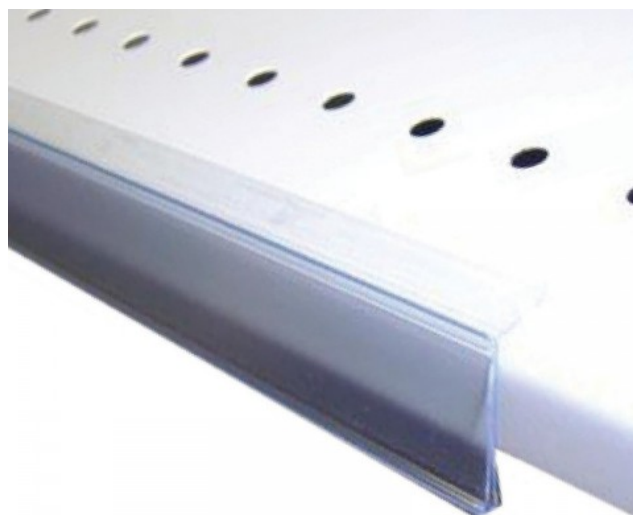
915mm Long - SCM-96418
1220mm Long - SCM-126418
1525mm Long - SCM-156418
1830mm Long - SCM-186418

Label Strip

Add labeling to your shelving with a choice of strip holders for efficient storage.

Product Codes

- Adhesive 900mm Label Strip - Box of 50 - SCWB-ADS9
- Hanging Label Strip Clips - Bag of 200 - SCWB-HDSCLIP



Label Strip



Hanging Label Strip Clips

Wire Shelf Dividers

Chrome shelf dividers in two (2) depth size options.

Key Benefits

- | Safe & rounded edges
- | Chrome plated & easy to clean
- | Available in two depths - 460 or 600mm
- | One (1) height option - 200mm

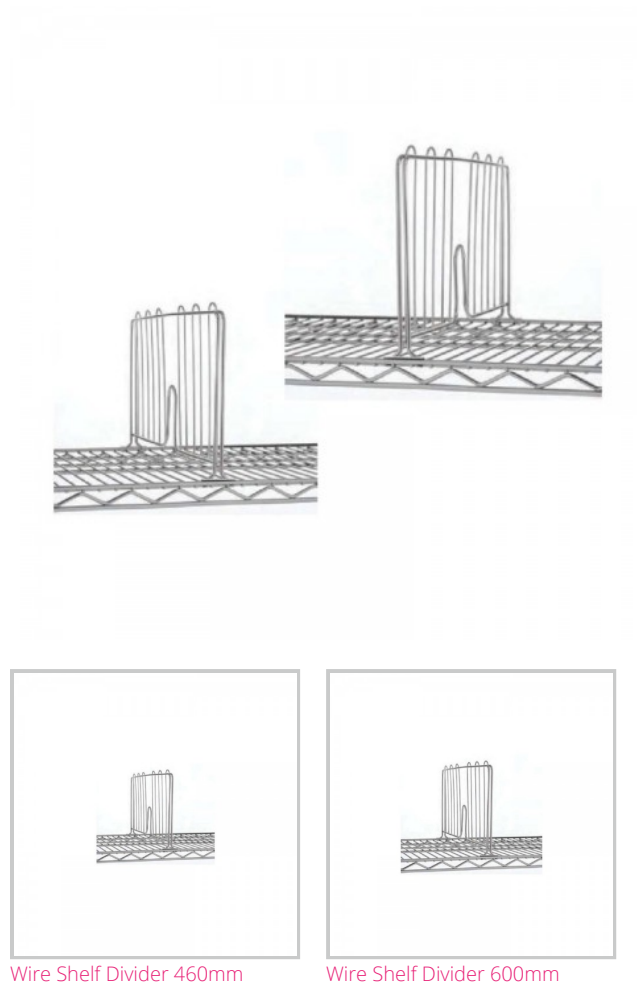
Product Codes

- Shelf Dividers 460mm - SMWC-D460
- Shelf Dividers 600mm - SMWC-D610

Why Buy

Simply clip these wire shelf dividers onto their matching shelf depths, to divide and provide separation for improved storage use and management. This can help to manage long, thin items, keep products of the same type together or allow a greater amount of stock to be stored into a set space.

These shelf dividers are best used on the following [mobile or static wire shelving](#).



Wire Shelf Divider 460mm

Wire Shelf Divider 600mm

Wire Shelf Ledge

Chrome shelf ledge in varies size options.

Key Benefits

- | Safe & rounded edges
- | Chrome plated & easy to clean
- | Available in a variety of lengths
- | One (1) height option - 100mm

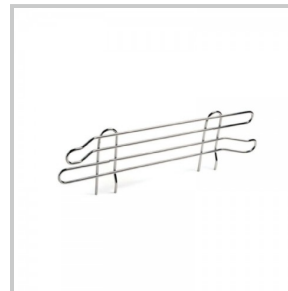
Product Codes

- Shelf Ledge 460 L x 100mm H - SMWC-L460
- Shelf Ledge 610 L x 100mm H - SMWC-L610
- Shelf Ledge 910 L x 100mm H - SMWC-L910
- Shelf Ledge 1215 L x 100mm H - SMWC-L1215
- Shelf Ledge 1520 L x 100mm H - SMWC-L1520
- Shelf Ledge 1820 L x 100mm H - SMWC-L1820

Why Buy

Simply clip these wire shelf ledges onto their matching shelf lengths or sides, to create a storage boundary for improved storage use and management. These ledges can help to manage general items, keep products of the same type together or allow a greater amount of stock to be stored into a higher location.

These shelf ledges are best used on the following [mobile or static wire shelving](#).



Wire Shelf Ledge

Dust Cover - Flap Back

Custom sizes made to your specifications in clear heavy duty PVC.

Key Benefits

- | Front opening flap-back design with hooks
- | Made from durable clear PVC
- | Size up to 1200 W x 600 D x 1800mm H
- | Extra-large custom sizes available
- | Easy to manage & clean
- | MADE IN QUEENSLAND

Product Codes (460mm D)

- Dust Cover to suit 460 x 610 unit - SMDC-460x610
- Dust Cover to suit 460 x 914 unit - SMDC-460x914
- Dust Cover to suit 460 x 1215 unit - SMDC-460x1215
- Dust Cover to suit 460 x 1524 unit - SMDC-460x1524
- Dust Cover to suit 460 x 1829 - SMDC-460x1829

Product Codes (610mm D)

- Dust Cover to suit 610 x 914 unit - SMDC-610x914
- Dust Cover to suit 610 x 1215 unit - SMDC-610x1215
- Dust Cover to suit 610 x 1524 unit - SMDC-610x1524
- Dust Cover to suit 610 x 1829 unit - SMDC-610x1829

Product Code Custom

- Custom Dust Covers - SCDC-CUSTOM (Include dimension requirements)

Why Buy

Tailor made to fit your trolley or shelving unit, our flap back cover has a heavy duty zip running down each side of the front entrance flap, which can be folded right over to allow full access. These covers can be made fit most shapes and include other useful features such as push handle slots.



