

Gel Pad Patch Application

Instructions to apply the CleanPatch-P to damaged gel pad surfaces that are used in surgical areas.

Key Benefits

- Use CleanPatch-P on soft gel surfaces that are for pressure reduction and positioning
- Apply on flat areas or over edges (2 dimensions)
- We recommend a maximum of 3 patches per gel pad
- We do not recommend layering multiple patches to cover large areas
- To avoid damaging the precise edge, DO NOT CUT CleanPatch-P

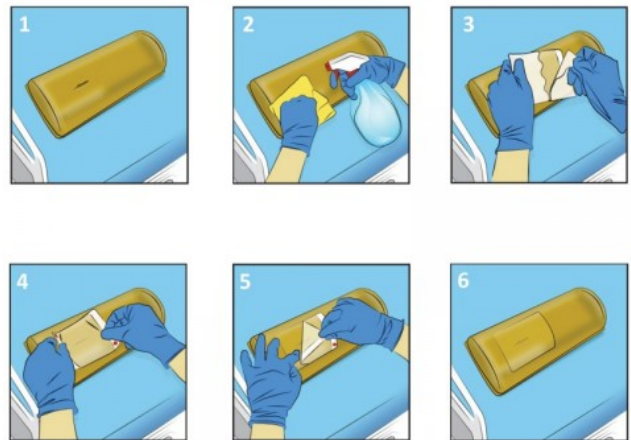
Related Product Codes

- 10 pack - CPGP-31001

Why Buy

1. Identify the damaged area and get a patch.
2. Clean the surface as per facility protocol and allow to dry.
3. Remove the white backing from the CleanPatch-P.
4. Hold the edges of the patch and position it over the damage.
5. Apply firm pressure to the patch, out to the edges. Slowly and carefully remove the clear top liner.
6. Clean the patch and surrounding area again as per hospital protocol.

There must be a >25mm margin around the damage site to ensure optimal adhesion.



v-02082023

"Confidence & Care, every day"

selectpatientcare.com.au

select