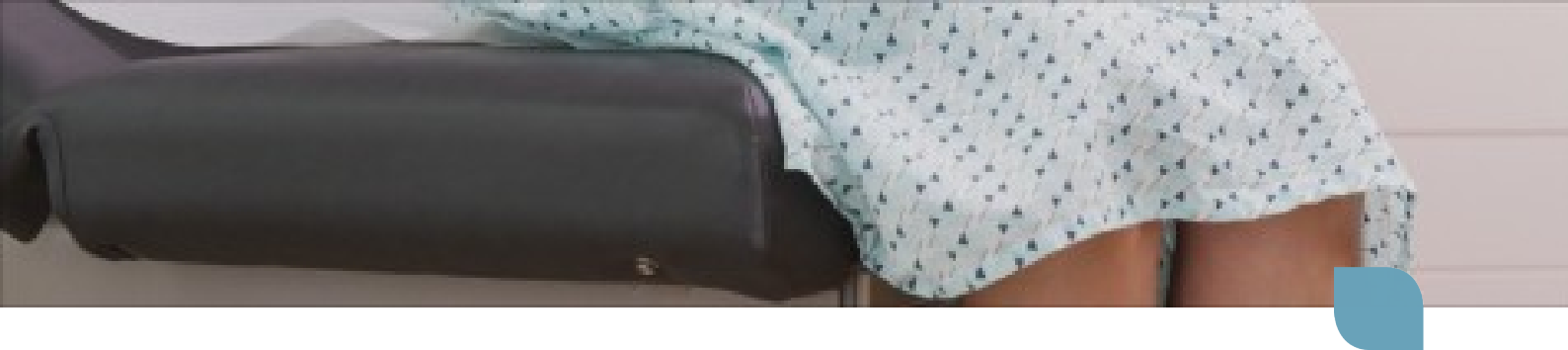




Vinyl Surface Repair Patches



Vinyl Surface Repair Patches

CleanPatch-V is a medical surface repair patch for vinyl upholstery, which restores damaged patient surfaces on clinical equipment such as chairs and exam tables, to ensure they are completely intact and hygienic.



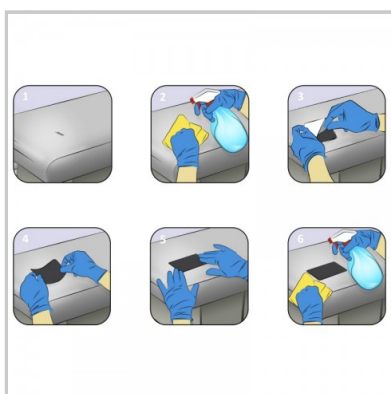
Vinyl Patches - Variety Kit



Vinyl Patches - Small



Vinyl Patches - Large



Vinyl Patch Application

Vinyl Patches - Variety Kit

CleanPatch-V is stronger and designed to repair the more demanding clinical patient surfaces.

Key Benefits

- Constructed of thin, yet very tough medical grade vinyl
- Conforms to a patient care surfaces such as chairs and exam tables
- Glue seals right to the edges preventing fluid ingress and lift
- Cost effectively extend the life of capital equipment
- Fully cleanable with hospital grade disinfectants
- Clinically validated and TGA registered

Product Code

- 10 pack - CPVP-23001

Variety Kit Includes

- 7 x Small strip patches
- 3 x Large rectangle patches

Patch Dimensions

- 44 x 100mm Small strip patch
- 145 x 200mm Large rectangle patch
- There must be a >25mm margin around the damage site to ensure optimal adhesion.

Why Buy

The vinyl patch has been designed to repair surfaces commonly found on clinical equipment such as chairs and exam tables. This variety pack has been developed for smaller facilities with lower usage or for larger units to test long term requirements. The combination of the smaller strips and the larger rectangle shapes ensures any type of damage is covered correctly and efficiently.

[View how to correctly apply the Vinyl Patch.](#)



Vinyl Patches - Small

CleanPatch-V is stronger and designed to repair the more demanding clinical patient surfaces.

Key Benefits

- Constructed of thin, yet very tough medical grade vinyl
- Conforms to a patient care surfaces such as chairs and exam tables
- Glue seals right to the edges preventing fluid ingress and lift
- Cost effectively extend the life of capital equipment
- Fully cleanable with hospital grade disinfectants
- Clinically validated and TGA registered

Product Code

- 10 pack - CPVP-21001

Patch Dimensions

- 44 x 100mm Small strip patch
- There must be a >25mm margin around the damage site to ensure optimal adhesion.

Why Buy

The vinyl patch has been designed to repair surfaces commonly found on clinical equipment such as chairs and exam tables. These small strips are very useful for minor damage such as punctures, cuts and point abrasions found on the soft vinyl surfaces so commonly in use in healthcare facilities today. A very cost-effective way of quickly ensuring that damage is checked and doesn't grow or remain an infection risk.

[View how to correctly apply the Vinyl Patch.](#)



Vinyl Patches - Large

CleanPatch-V is stronger and designed to repair the more demanding clinical patient surfaces.

Key Benefits

- Constructed of thin, yet very tough medical grade vinyl
- Conforms to a patient care surfaces such as chairs and exam tables
- Glue seals right to the edges preventing fluid ingress and lift
- Cost effectively extend the life of capital equipment
- Fully cleanable with hospital grade disinfectants
- Clinically validated and TGA registered

Product Code

- 5 pack - CPVP-22002

Patch Dimensions

- 145 x 200mm Large rectangle patch
- There must be a >25mm margin around the damage site to ensure optimal adhesion.

Why Buy

The vinyl patch has been designed to repair surfaces commonly found on clinical equipment such as chairs and exam tables. These large rectangle patches are very useful for major damage such as cuts, tears and abrasion that can be found on the soft vinyl surfaces so commonly in use in healthcare facilities today. A cost-effective way of quickly ensuring that damage is checked and doesn't grow or remain an infection risk.

[View how to correctly apply the Vinyl Patch.](#)



Vinyl Patch Application

Instructions to apply the CleanPatch-V to damaged vinyl surfaces such as examination tables and chairs.

Key Benefits

- Use CleanPatch-V on vinyl surfaces that are for patient use
- Apply on flat areas or over edges (2 dimensions)
- We recommend a maximum of 4 to 6 patches per product
- CleanPatch-V will adhere to the majority of vinyl surfaces and some types of nylon
- Do not use CleanPatch on surfaces with signs of fluid ingress or contamination, such as staining or warping
- We do not recommend layering multiple patches to cover large areas
- CleanPatch-V may not adhere to some types of nylon or coatings that contain Teflon
- To avoid damaging the precise edge, DO NOT CUT CleanPatch-V



Related Product Codes

- Variety Kit - 10 pack - CPVP-23001
- Small strip - 10 pack - CPVP-21001
- Large rectangle - 5 pack - CPVP-22002

Why Buy

1. Identify the damaged area and select the correct sized patch.
2. Clean the surface as per facility protocol and allow to dry.
3. Remove the white backing from the CleanPatch-V.
4. Hold the edges of the patch and position it over the damage.
5. Apply firm pressure to the patch, out to the edges.
6. Clean the patch and surrounding area again as per hospital protocol.

There must be a >25mm margin around the damage site to ensure optimal adhesion.

Notes
