

Stretch Material Repair Patches



Stretch Material Repair Patches

CleanPatch is the first medical-grade 'stretch' repair patch for bed and stretcher mattresses and comfort chairs that quickly and cost effectively restores damaged pressure care surfaces to ensure they are completely intact and hygienic.



Stretch Patches - Variety Kit



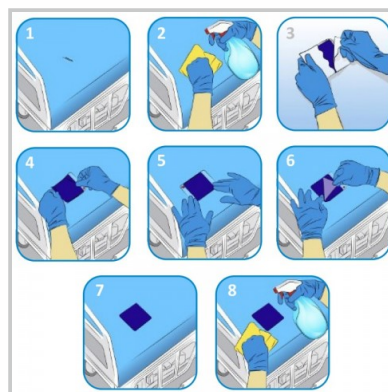
Stretch Patches - Small



Stretch Patches - Medium



Stretch Patches - Large



Stretch Patch Application

Stretch Patches - Variety Kit

Original CleanPatch designed to repair common patient surfaces.

Key Benefits

- Constructed of ultra thin, yet very tough PU material
- Full two way stretch to conform to a pressure care surface
- Glue seals right to the edges preventing fluid ingress and lift
- Cost effectively extend the life of capital equipment
- Fully cleanable with hospital grade disinfectants
- Clinically validated and TGA registered

Product Code

- 10 pack - CPSP-18003

Variety Kit Includes

- 5 x Small round patches
- 3 x Medium square patches
- 2 x Large rectangle patches

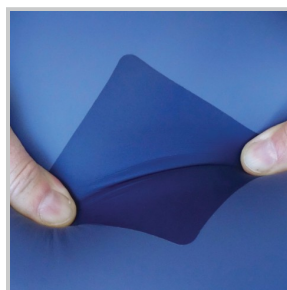
Patch Dimensions

- 51mm Diameter small round patch
- 89 x 89mm Medium square patch
- 89 x 152mm Large rectangle patch
- There must be a >13mm margin around the damage site to ensure optimal adhesion.

Why Buy

The stretch patch has been designed to repair soft pressure relieving surfaces commonly found on stretcher mattresses and comfort chairs. This variety pack has been developed for small facilities with lower usage or for larger units to test their long term requirements. The combination of the smaller round dot to the larger rectangle shape ensures any type of damage is covered correctly and efficiently.

[View how to correctly apply the Stretch Patch.](#)



Stretch Patches - Small

50mm diameter round stretch patches.

Key Benefits

- Constructed of ultra thin, yet very tough PU material
- Full two way stretch to conform to a pressure care surface
- Glue seals right to the edges preventing fluid ingress and lift
- Cost effectively extend the life of capital equipment
- Fully cleanable with hospital grade disinfectants
- Clinically validated and TGA registered

Patch Dimensions

- 51mm Diameter small round patch
- There must be a >13mm margin around the damage site to ensure optimal adhesion.

Product Codes

- 10 pack - CPSP-11003
- 30 pack - CPSP-11001

Why Buy

The stretch patch has been designed to repair soft pressure relieving surfaces commonly found on stretcher mattresses and comfort chairs. These small round patches are very useful for minor damage such as needle stick or sharp point abrasion that can happen on the soft pressure care surfaces so commonly in use in healthcare facilities today. A very cost effective way of quickly ensuring that damage is checked and doesn't grow or remain an infection risk.

[View how to correctly apply the Stretch Patch.](#)



Stretch Patches - Medium

89mm square stretch patches.

Key Benefits

- Constructed of ultra thin, yet very tough PU material
- Full two way stretch to conform to a pressure care surface
- Glue seals right to the edges preventing fluid ingress and lift
- Cost effectively extend the life of capital equipment
- Fully cleanable with hospital grade disinfectants
- Clinically validated and TGA registered

Patch Dimensions

- 89 x 89 mm Medium square patch
- There must be a >13mm margin around the damage site to ensure optimal adhesion.

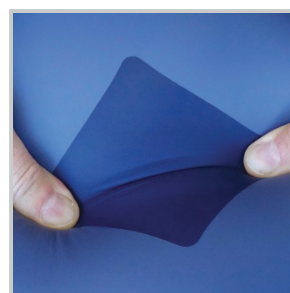
Product Codes

- 5 pack - CPSP-10003
- 20 pack - CPSP-10001

Why Buy

The stretch patch has been designed to repair soft pressure relieving surfaces commonly found on stretcher mattresses and comfort chairs. These square patches are very useful for standard damage such as cuts and tears found on the soft pressure care surfaces so commonly in use in healthcare facilities today. A very cost effective way of quickly ensuring that damage is checked and doesn't grow or remain an infection risk.

[View how to correctly apply the Stretch Patch.](#)



Stretch Patches - Large

152mm x 89mm rectangle stretch patches.

Key Benefits

- Constructed of ultra thin, yet very tough PU material
- Full two way stretch to conform to a pressure care surface
- Glue seals right to the edges preventing fluid ingress and lift
- Cost effectively extend the life of capital equipment
- Fully cleanable with hospital grade disinfectants
- Clinically validated and TGA registered

Patch Dimensions

- 152 x 89 mm Large rectangle patch
- There must be a >13mm margin around the damage site to ensure optimal adhesion.

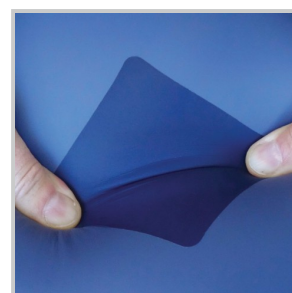
Product Codes

- 5 pack - CPSP-12003
- 10 pack - CPSP-12001

Why Buy

The stretch patch has been designed to repair soft pressure relieving surfaces commonly found on stretcher mattresses and comfort chairs. These large rectangle shaped patches are very useful for major damage such as rips and abrasion that can be found on the soft pressure care surfaces so commonly in use in healthcare facilities today. A cost effective way of quickly ensuring that damage is checked and doesn't remain an infection risk.

[View how to correctly apply the Stretch Patch.](#)

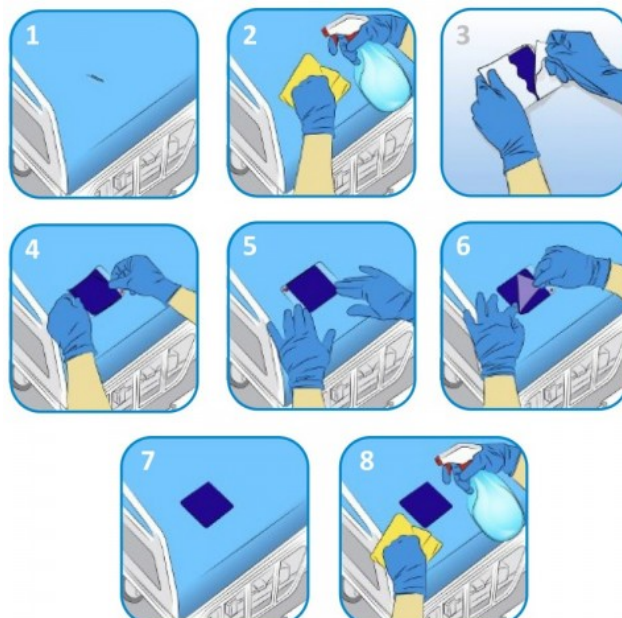


Stretch Patch Application

Instructions to apply the CleanPatch to damaged pressure care surfaces such as mattresses and comfort chairs.

Key Benefits

- Use CleanPatch on soft surfaces that are for pressure relief
- Apply on flat areas or over edges (2 dimensions)
- We recommend a maximum of 4 to 6 patches per mattress
- CleanPatch will adhere to the majority of PU or vinyl surfaces and some types of nylon
- Do not use CleanPatch on surfaces with signs of fluid ingress or contamination, such as staining or warping
- We do not recommend layering multiple patches to cover large areas
- CleanPatch may not adhere to some types of nylon or coatings that contain Teflon
- To avoid damaging the precise edge, DO NOT CUT CleanPatch



Related Product Codes

- Variety Kit - 10 pack - CPSP-18003
- Small Round - 10 pack - CPSP-11003
- Small Round - 30 pack - CPSP-11001
- Medium Square - 5 pack - CPSP-10003
- Medium Square - 20 pack - CPSP-10001
- Large Rectangle - 5 pack - CPSP-12003
- Large Rectangle - 10 pack - CPSP-12001

Why Buy

1. Identify the damaged area and select the correct sized patch.
2. Clean the surface as per facility protocol and allow to dry.
3. Remove the white backing from the CleanPatch.
4. Hold the edges of the patch and position it over the damage.
5. Apply firm pressure to the patch, out to the edges.
6. Slowly and carefully remove the clear top

Notes

Notes
