

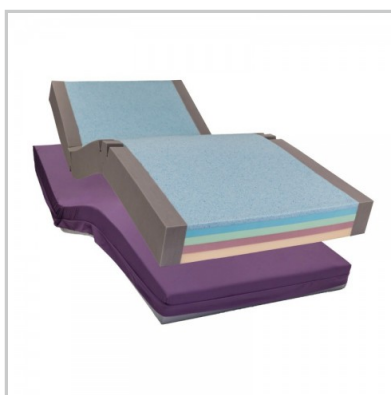


Pressure Care



Pressure Care

We work with the best pressure care manufacturers to provide you with the ultimate patient stretcher or bed mattresses and cushions, so that you can ensure your patients are always comfortable.



Mattresses

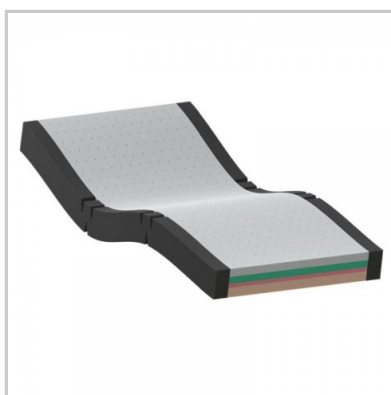


Positioning Cushions

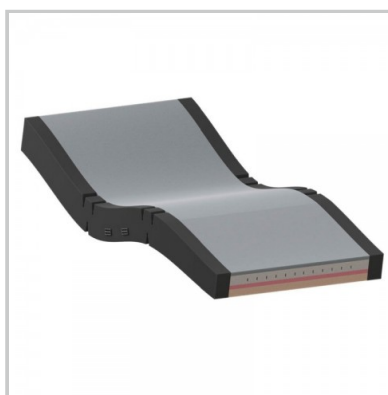


Mattresses

Whilst we have a substantial range and combinations of Forte mattresses available, we have decided for simplicity to show you the ones that really matter - best value for money with the highest patient comfort levels and outcomes.



VivaForm V3 Care
Mattress



VivaForm V7 Acute Care
Mattress



VivaForm V9 Hybrid Static
Response Mattress



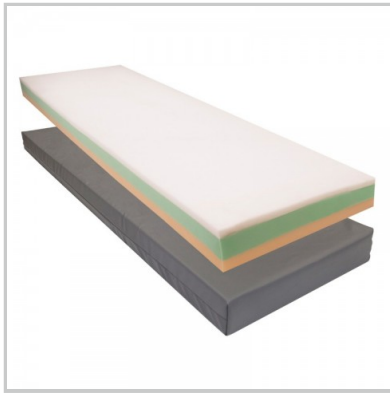
VivaForm Mental Health
Mattress



VivaForm V20 Critical
Care Mattress



360 Cover Zip



High Care Trolley Mattress



Standard Evac System



Premium Evac System



Fully Welded Seams



Mattress Handles



Custom Mattress Printing



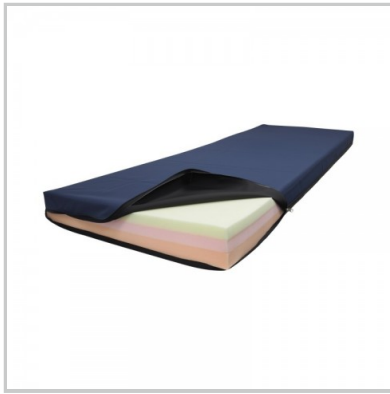
Fall Protection Floor Mat



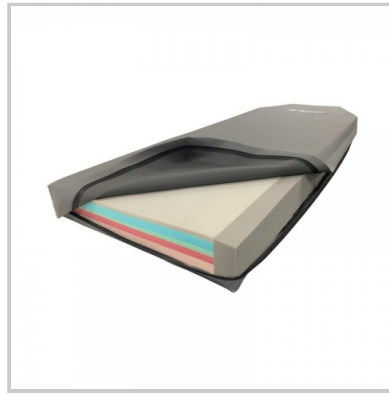
Mattress Bolster



PATSlide - All Purpose



Trolley Mattress



Premium Trolley Mattress

VivaForm V3 Care Mattress

The VivaForm V3 Series builds upon the proven performance of existing mattress technology and offers increased weight capacity and an integrated sloped heel region for additional pressure redistribution.

Specifications

Weight Capacity: up to 200kg

Core: Four layered pressure care foam system

Cover Upgrade: Also available with a Premiflex Mattress Cover option

Cover: 4-way stretch pressure care polyurethane cover, with PVC base for optimum durability

Zipper: Integrated for easy cover removal, with waterfall protection flap

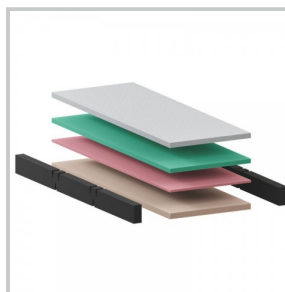
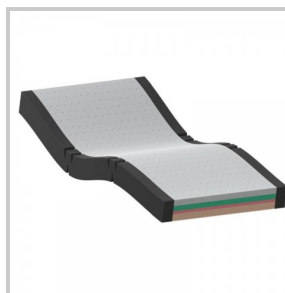
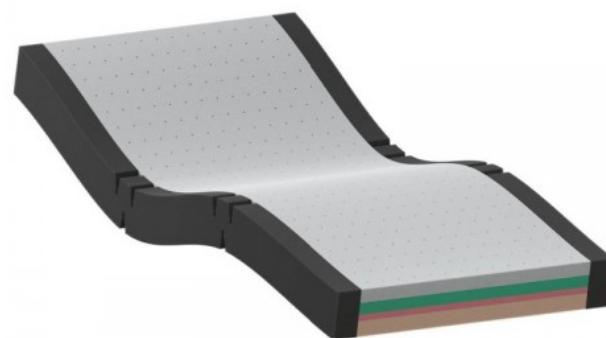
Standard size: 1980 x 880 x 160mm

Warranty: 5-year core foam and 2-year cover warranty

MADE IN AUSTRALIA

Product Codes

- VivaForm V3 Care Mattress - V3S1000
- VivaForm V3 Care Mattress with Premiflex upgrade - V3S1000PC



VivaForm V7 Acute Care Mattress

A Game-Changing Hospital and Aged Care Mattress.

Specifications

Weight Capacity: from 30-250kg

Core: Four layered pressure care foam system with integrated self-adjusting air cell

Mattress Upgrade: Airoform Gel layer controlling microclimate, and the Anti-Shearing Inner Cover

Cover: 4-way stretch pressure care polyurethane cover withstanding 10,000 ppm, fully vapour permeable

Zipper: Integrated for easy cover removal, with waterfall protection flap

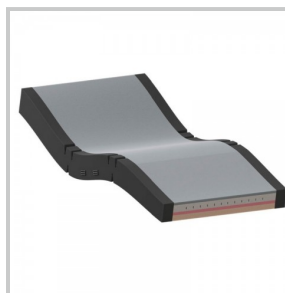
Standard size: 1980 x 880 x 185mm

Warranty: 5-year core foam and 4-year cover warranty

MADE IN AUSTRALIA

Product Codes

- VivaForm V7 Acute Care Mattress - V7S1000
- VivaForm V7 Acute Care Airoform Gel Mattress Antishear & Micro - V7S1000-IC-GEL



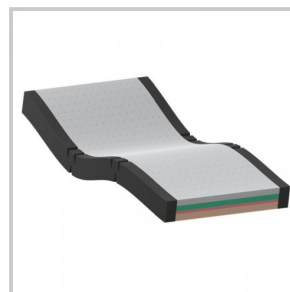
VivaForm V7 Acute Care Mattress



VivaForm V7 Acute Care Mattress



VivaForm V7 Acute Care Mattress



VivaForm V7 Acute Care Mattress with Airoform Gel layer



VivaForm V7 Acute Care Mattress with Airoform Gel layer



VivaForm V7 Acute Care Mattress with Airoform Gel layer

VivaForm V9 Hybrid Static Response

The VivaForm V9 is an advanced Hybrid Static Care Support Surface combining the pressure redistribution benefits of both foam and air.

Specifications

Weight Capacity: from 300kg

Core: 13+ Self Adjusting Air Cells, with Airoform Response Interface (Gel) Layer and Firm Base Foundation Support

Cover: 4-way stretch pressure care polyurethane cover withstanding 10,000 ppm, fully vapour permeable. 4-Way Stretch Anti-Shearing Inner Cover

Zipper: Integrated for easy cover removal, with waterfall protection flap

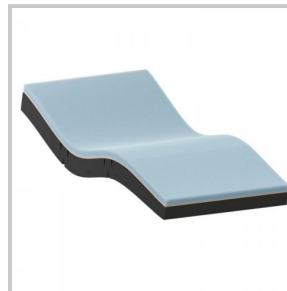
Standard size: 1980 x 880 x 185mm

Warranty: 5-year core foam and 4-year cover warranty

MADE IN AUSTRALIA

Product Code

- V9S1000



VivaForm Mental Health Mattress

High specification foam promotes longevity and performance in a variety of Mental health environments.

Key Benefits

- | Airoform immersion technology
- | Longevity & performance in a range of environments
- | Utilising 5 zones of calibrated castellations

Specifications

Weight Capacity: up to 150kg

Core: 5 zones of calibrated castellations. Airoform Memory and Response interface foam layer

Cover: 4-way stretch pressure care polyurethane and vapour permeable cover

Zipper: Fully sealed – no zipper, integrated pressure reduction system, High frequency sealed and welded seams

Standard size: 1980 x 880 x 150mm

Warranty: 5-year core foam and 4-year cover warranty

MADE IN AUSTRALIA

Product Code

- FM5B1000



VivaForm V20 Critical Care Mattress

The VivaForm V20 is a Gentle Critical Care air mattress system providing true leadership when patient care demands unprecedented comfort alongside outstanding care.

Specifications

Weight Capacity: from 30-180kg.

Core: 22-Cell System, Firm Base Layer and Strengthened Transfer Sides - Airoform Memory and Response interface foam layer.

Cover: 4-way stretch pressure care polyurethane cover withstanding 10,000 ppm, fully vapour permeable. 4-Way Stretch Anti-Shearing Inner Cover.

Zipper: Integrated 4-Sided Zipper for easy cover removal, with waterfall protection flap.

Standard size: 1980 x 880 x 215mm.

Warranty: 5-year core foam and 4-year cover, 2-Year Air Cell and 1-Year Pump.

MADE IN AUSTRALIA

Product Code

- V20S1000



360 Cover Zip

Upgrade the standard '2 sided' mattress cover zip to a 360 degree '4 sided' zip for best access.

Key Benefits

- Full surround zip beginning and ending in one place
- Tough construction with a quality sealed finish

Product Code

- FHMA-360ZIP

Why Buy

A mattress can sometimes be fully welded and sealed permanently, which makes it difficult in the future to inspect for cover penetration and evidence of damage. A standard zipped mattress works down a long side and across the end of a mattress, seeking a balance with longevity, cost and infection control. For high risk environments, a four sided zip helps by giving fast and easy access to be able to inspect the entire internal foams and cover.



High Care Trolley Mattress

Outstanding durability, comfort and performance in a range of sizes.

Key Benefits

- | Up to 200kg or 300kg effective weight capacity
- | 100mm thick with triple layered core
- | Premiflex grade welded stretch cover
- | Custom widths and lengths available
- | 5-year foam core and 4-year cover warranty
- | MADE IN AUSTRALIA

Product Codes (200kg)

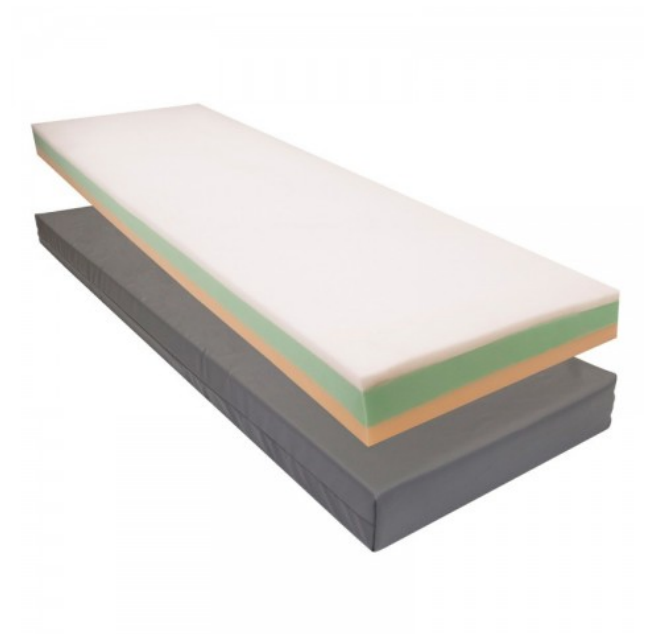
- 2000 x 700mm 200kg - FHSM-IS24000-200702
- 1930 x 730mm 200kg - FHSM-IS24000-193732
- 1900 x 770mm 200kg - FHSM-IS24000-190772
- 1900 x 680mm 200kg - FHSM-IS24000-190682
- 2100 x 900mm 200kg - FHSM-IS24000-210902

Product Codes (300kg)

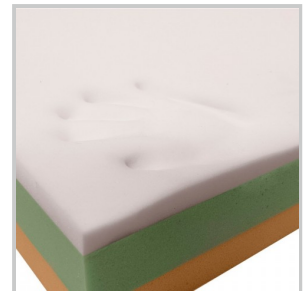
- 2000 x 700mm 300kg - FHSM-IS24000-200703
- 1930 x 730mm 300kg - FHSM-IS24000-193733
- 1900 x 770mm 300kg - FHSM-IS24000-190773
- 1900 x 680mm 300kg - FHSM-IS24000-190683
- 2100 x 900mm 300kg - FHSM-IS24000-210903

Why Buy

Suitable for use in Emergency, Theatre and general patient transfer, this pressure reducing mattress can be manufactured to fit any stretcher currently in use with premium materials specially chosen for their performance. The firm inner base layers coupled with visco-elastic upper deliver uncompromised comfort with the best protection cover available.



Triple Layer Inner Core



Slow Recovery Upper



Durable Cover

Standard Evac System

A system of self contained straps sealed in side pockets that can be quickly transformed into a sliding cocoon.

Key Benefits

- Cross patient straps retained in pockets
- High visibility tough webbing with 'quick fit' snap buckles
- Ability to pull the mattress with dual evac pull-points
- Tough base vinyl material
- Carry handles

Product Code

- FHMA-SEV

Why Buy

The Forte Evacuation System is fully integrated and complies with infection control guidelines, protecting from damage occurring as a result of straps that fall loose. All patient cross straps and pull/steer straps are self-contained within underside pockets. In the event of evacuation, straps are quickly attached with snap buckles and care staff have the option of evacuation from either the head or foot end. The tough base material facilitates easier sliding.



Premium Evac System

A system of self contained straps sealed in side pockets that can be quickly transformed into a sliding cocoon.

Key Benefits

- Securely retained straps sealed into side pockets
- High visibility tough webbing with 'quick fit' metal snap fasteners
- Ability to pull the mattress from either end
- Specially shaped foam to allow easy curling around the patient
- Low friction base strip underneath along the length of the mattress
- Non-slip outer edges to retain the mattress in normal use

Product Code

- FHMA-PEV

Why Buy

The Forte Assure Evacuation System is fully integrated and complies with infection control guidelines, protecting from damage occurring as a result of straps that fall loose. All patient cross straps and pull/steer straps are self-contained within sealed polyurethane side-pockets enclosed by a zipper. In the event of evacuation, straps are quickly attached through spring fasteners and care staff have the option of evacuation from either the head or foot end. Strategically placed modifications within the foam core allow it to encapsulate the patient providing additional protection and the special base material facilitates easier sliding.



Fully Welded Seams

All seams high frequency sealed and welded with no zipper.

Product Code

- FHMA-FWS

Why Buy

Protects foam core from possible patient damage in mental health wards. Complies with infection control guidelines, incorporates and pressure relief vent to protect seams against fatigue as a result of excessive pressure.



Mattress Handles

Pair of tough, convenient handles for moving or carrying mattresses.

Key Benefits

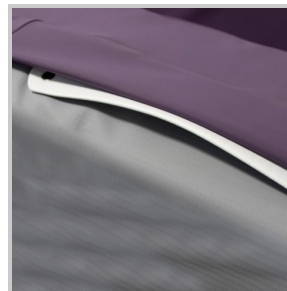
- Made from 'poured' PVC soft-touch webbing
- Impervious to fluid penetration and absorption for superior infection control
- Non-abrasive design

Product Codes

- 2 handles (1 pair) - FHMA-HAND2
- 4 handles (2 pair) - FHMA-HAND4

Why Buy

Move mattresses with ease by these specially designed handles made for the medical environment. A strong construction with reinforced backing and fully sealed for infection control.



Custom Mattress Printing

Allows clinicians to print any details required on the mattress cover at point of manufacture.

Product Code

- FHMA-CPRINT

Why Buy

Use digital print to customise your mattress with unique details. Clearly label the ward, department or type of use on the mattress in a stretchable and durable print to keep control. Size restrictions may apply.



Fall Protection Floor Mat

Highly effective impact protection for patients at risk of falling from the bed surface. Folds for storage.

Key Benefits

- Superior patient protection
- Dual density, impact absorbing high density foam core
- Heavy duty, rip-stop vinyl covering
- 100% fluid proof, welded, fire retardant cover
- Lightweight and folds for easy handling
- 1900 L x 750 W x 50mm Thick
- MADE IN AUSTRALIA

Product Code

- FHMA-FMS1000

Why Buy

The Forté Finale Fall Protection Mats provide both impact protection for patients at risk of falling from the bed surface.

Care staff can have peace of mind that these mats utilise an extremely high impact absorbing foam core for superior patient protection. Convenient, lightweight, handmade and durable, the mats are an essential part of any facility falls-management program.



Mattress Bolster

Pressure Reducing Mattress Bolster for bed extension.

Key Benefits

- Custom made bolsters available in a wide range of options
- Available in single layer foam to multi-layered configurations
- Handmade from quality materials
- Cover options: Heavy Duty PVC, Pressure Care Material and Mental Health Grade Material
- Standard Size: 850 W x 230 D x 200mm H (Custom sizes available).

Product Code

- FHMB-852320

Why Buy

Forté Custom Made Bolsters are available in a wide range of options to meet with varied patient needs. Available in core structures from a single layer foam to multi-layered configurations, Forté Bolsters are handmade from quality raw materials that meet and exceed clinical care requirements. Cover options include Heavy Duty PVC, Pressure Care Material and Mental Health Grade Material.



PATSlide - All Purpose

PATSlide (or transfer board) for safe transfer and manual handling of patients from one surface to another.

Key Benefits

- | Safe and easy patient transfers
- | Reduces the risk of strain or injury to the carer
- | Handholes provide maximum grip
- | Slip resistant pads increase stability
- | Made from lightweight material
- | High impact tolerance

Product Code

- CQPT-LB0310

Why Buy

PATSlide (transfer) boards help in facilitating the sliding or transfer of a patient from one surface to another, these slides minimise the risk of strain & injury to either the patient or their carer. Made from radio-lucent material which is lightweight, highly impact tolerant and importantly static insulative. Handholes provide maximum grip for the carer and slip resistant pads increase stability during transfers.

This product is **not to be used** as a lifting device.



All Purpose PATSlide

Trolley Mattress

High grade mattress with excellent durability and pressure relieving comfort for patient stretchers.

Key Benefits

- | Thicknesses that aid egress and imaging
- | Protran mattress - single foam layer
- | Premia mattress - 3 effective foam layers
- | Premia Barituff mattress - 4 support layers
- | Welded 'double coated' stretch cover
- | Non-slip base design
- | Permanent care label
- | Fluid proof zip (excludes 75mm mattress)
- | MADE IN AUSTRALIA

Product Codes

- 100mm Premia Mattress - MPT-CM-100-PRP
- 150mm Premia Barituff Mattress - MPT-CM-150-PRB
- 100mm Protran Mattress - MPT-CM-100-PTP
- 110mm Premia Barituff Mattress - MPT-CM-110-PRB
- 75mm Protran Mattress - MPT-CM-75-PTP

Mattress Sizes

- Standard - 680 W x 1900mm L
- Narrow - 570mm W x 1900mm L
- Wide - 830mm W x 1900mm L
- Bariatric - 980mm W x 1900mm L

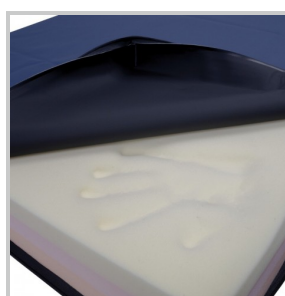
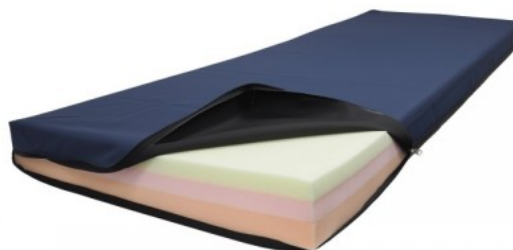
Mattress Shapes

- Square Ends (electric stretcher)
- Truncated End (hydraulic stretcher)

Why Buy

The Contour Premia mattress has been designed to optimize patient weight capacity and comfort by using a selection of quality foam layers to help in both preventing patients from bottoming and pressure reduction. The Contour Protran mattress is recommended for short stay patients with a single medium density foam section to facilitate special patient transfers or clear imaging.

Patient stretching capabilities by mattress



Premia Pressure Care



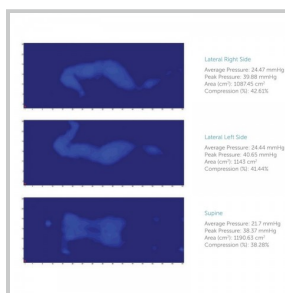
Premia Mattress Cover



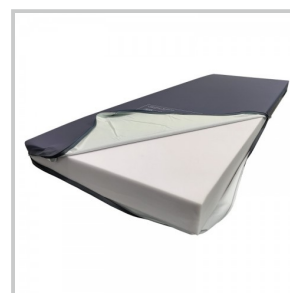
Mattress Zipper



Mattress Label



Pressure Mapping



Protran Mattress

Premium Trolley Mattress

A high performance mattress with outstanding durability and patient support for demanding acute environments.

Key Benefits

- | 5-layered high performance core
- | Dual interface and central immersion regions with firm base support
- | Integrated profile stabilizing sides and unique hinging system
- | Double coated, welded polyurethane cover with fluid proof zip
- | Superior 110mm mattress thickness
- | Non-slip base material with high friction grip
- | 5-year core foam and 4-year cover warranty
- | Custom sizing and labeling available
- | MADE IN AUSTRALIA

Product Codes

- Square Ends (electric stretcher) - MPT-CM-110-PRPF
- Truncated End (hydraulic stretcher) - MPT-CM-110-PRF

Mattress Sizes

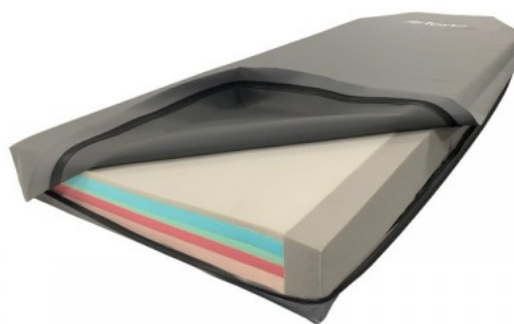
- Standard - 680 W x 1900mm L
- Narrow - 570mm W x 1900mm L
- Wide - 830mm W x 1900mm L

Why Buy

The **Premia Forte** pressure reducing, patient trolley support surface is our high spec version of the standard Contour Premia mattress. The specialised core structure provides best protection to patients at risk of injury without compromising support in crucial areas. A Premiflex cover provides ultimate patient comfort and protection. This mattress delivers an effective outcome - combining both high risk pressure care and longevity for demanding applications.

Patients stay time breakdown by mattress:

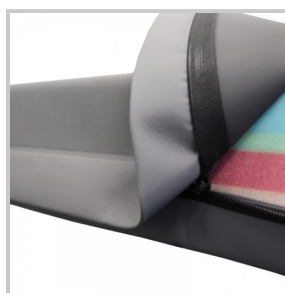
| Premium Stretcher Mattress rated for 24hr stays



Stabilizing sides



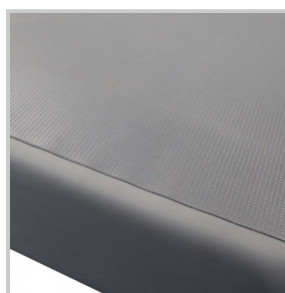
Premium pressure reduction



Fluid proof zip



Profile cut sides



Non-slip base



Positioning Cushions

Abecca positioning support cushions are designed to keep the patient comfortable in their lying and sitting positions whilst reducing pressure and encouraging natural posture. Benefit by quality welded stretch covers, clear positioning markings and a carefully designed core.



Concave Heel Wedge



Patient Wedge



Double Heel Wedge

Concave Heel Wedge

A contoured leg support that inhibits lateral movement, elevating and providing optimal support for the calf and foot.

Key Benefits

- | Pressure reducing heel wedge
- | Provides optimal support
- | Calf shaped to hold leg in place
- | Non-slip base design

Product Code

- AHPC-FM5030

Why Buy

Whether it be a requirement to keep the leg elevated or to take away all pressure from the heel and foot, this cushion has been designed to shape comfortably around the patients calf, giving maximum support and relief to the pressure point created through long term unnatural positioning.



Patient Wedge

Body positioning device effective in redistributing pressure, providing effective side/forward positioning and roll over.

Key Benefits

- | Redistribution of body pressure
- | Effective side or forward positioning
- | Non-slip base design
- | Maximises patient support

Product Codes

- AHPC-FM5000

Why Buy

Slide this cushion under your patient and correctly position them, whilst they settle into a soft memory foam layer that maximises support and spreads loading evenly to take away pressure points. The firm inner core base layer assists in holding the positioning or roll over steady.



Underside with zipper

Double Heel Wedge

Elevates the entire length of the lower leg avoiding pressure and ensuring access and aeration for draining ulcers.

Key Benefits

- | Pressure reducing double width heel wedge
- | Provides optimal support
- | Effective side or forward positioning
- | Non-slip base design

Product Code

- AHPC-FM5010

Why Buy

Slide this cushion under your patient's legs and correctly position them, whilst they settle into a soft memory foam layer that maximises support and spreads loading evenly to take away pressure points. The firm inner core base layer assists in holding the positioning steady.



Notes



Notes



Notes



